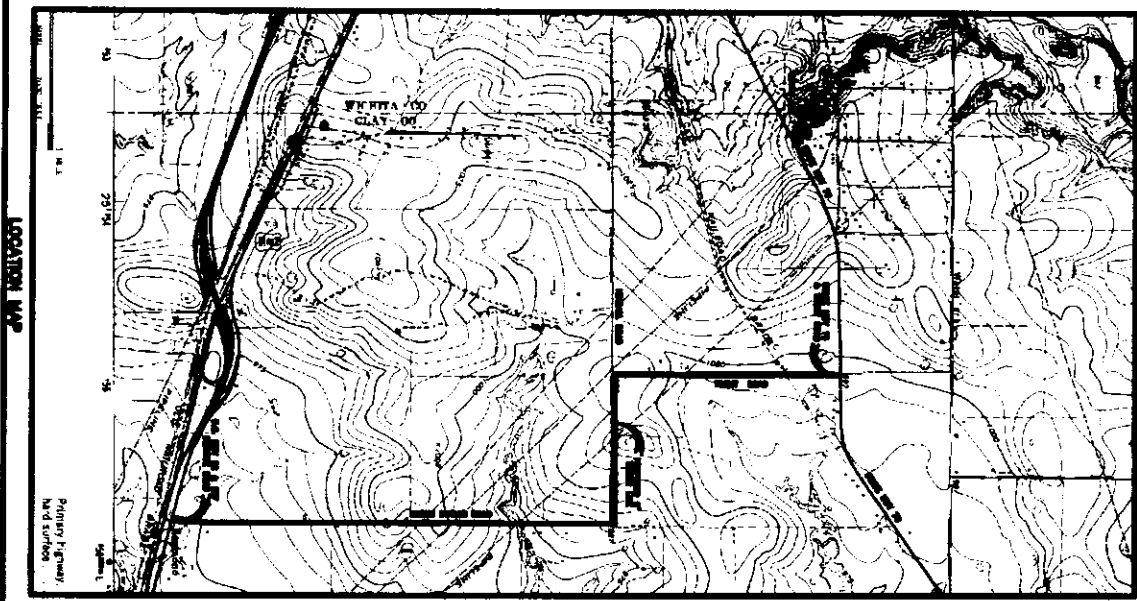


DEAN DALE SPECIAL UTILITY DISTRICT HAMMOND RANCH WATER PROJECT

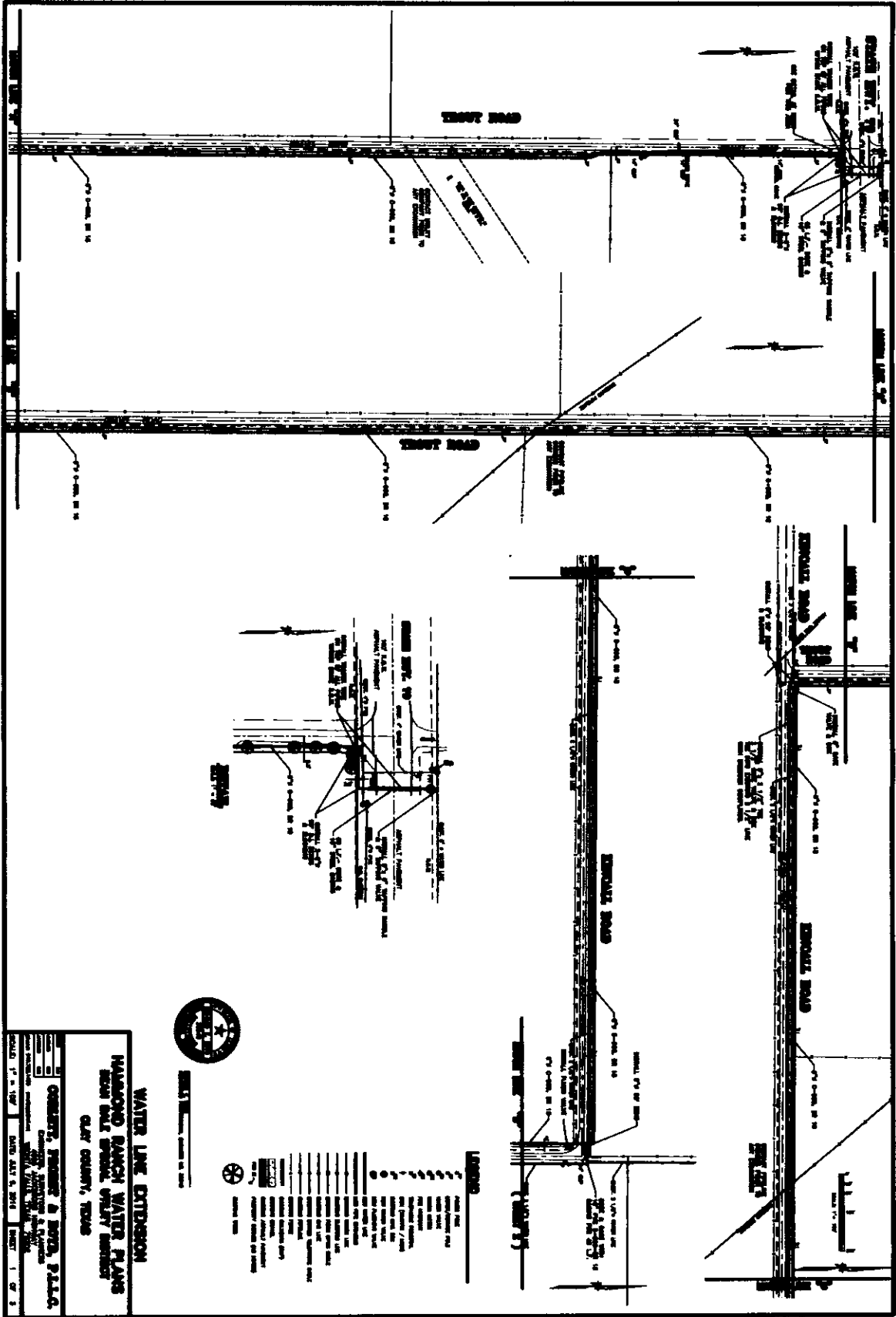
JULY 2016

BOARD OF DIRECTORS

Dean Dale Special Utility District
6741 State Highway 79N
Wichita Falls, TX 76305
940-766-2255 940-322-5302 (fax)
General Manager: Timmy Gee
Board President: Wilburn Reichert
Board Vice President: Randy Roberson



ENGINEER - SURVEYOR:
CORLETT, PROBST & BOYD, P.L.L.C.
ENGINEERS & SURVEYORS
4605 JACKSBORO HIGHWAY
WICHITA FALLS, TEXAS 76302
PHONE: (940) 723-1455

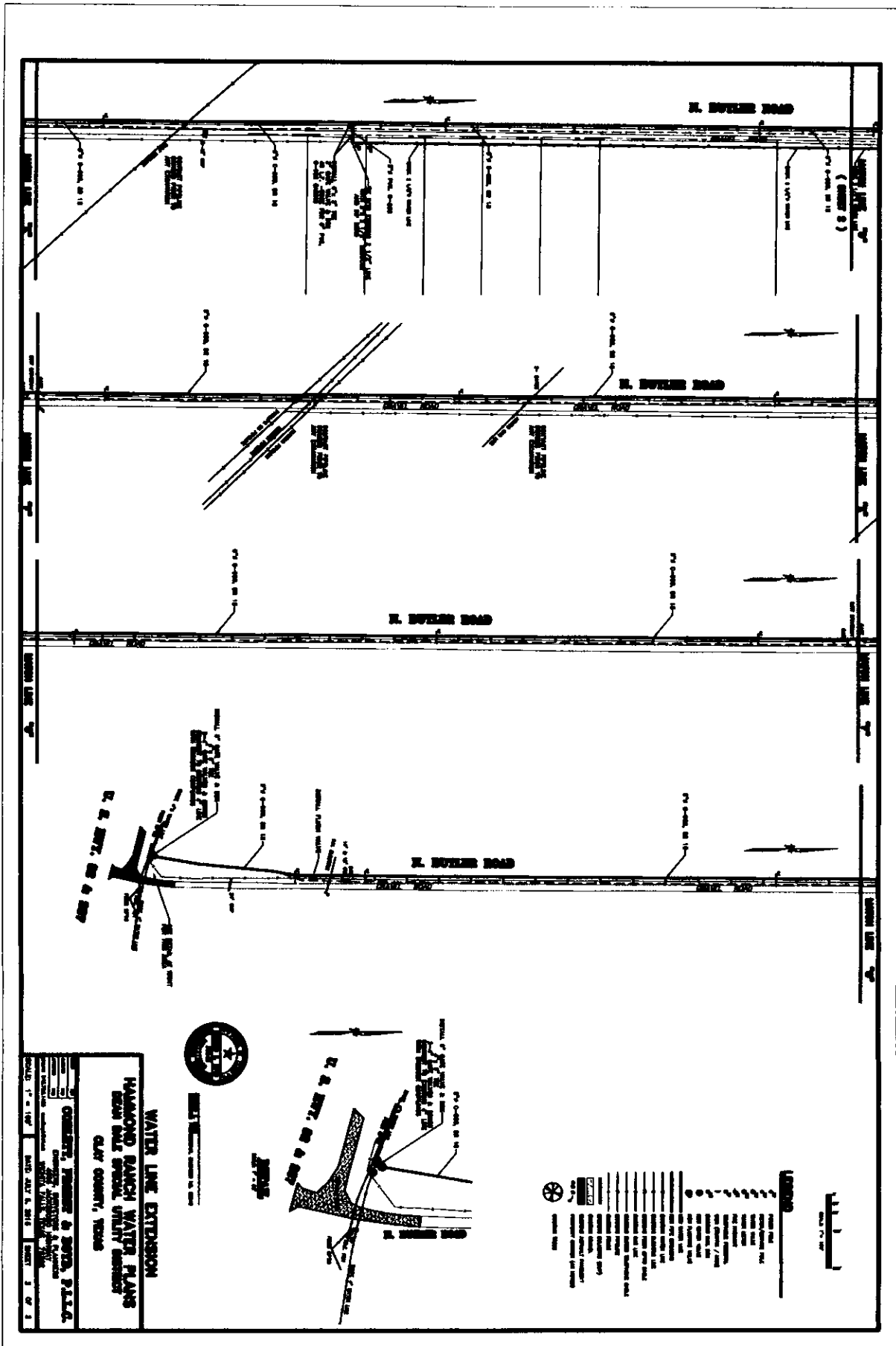


WATER LINE EXTENSION
HARRISON RANCH WATER PLANT
FROM BULL SPRING WATER SERVICE
CLAY COUNTY, TEXAS

CONSULTING ENGINEERS & ARCHITECTS
 HARRISON RANCH WATER PLANT
 CLAY COUNTY, TEXAS
 SHEET 1 OF 2



- LEGEND**
- 3" W.P. PIPE
 - 4" W.P. PIPE
 - 6" W.P. PIPE
 - 8" W.P. PIPE
 - 10" W.P. PIPE
 - 12" W.P. PIPE
 - 16" W.P. PIPE
 - 20" W.P. PIPE
 - 24" W.P. PIPE
 - 30" W.P. PIPE
 - 36" W.P. PIPE
 - 42" W.P. PIPE
 - 48" W.P. PIPE
 - 54" W.P. PIPE
 - 60" W.P. PIPE
 - 66" W.P. PIPE
 - 72" W.P. PIPE
 - 78" W.P. PIPE
 - 84" W.P. PIPE
 - 90" W.P. PIPE
 - 96" W.P. PIPE
 - 102" W.P. PIPE
 - 108" W.P. PIPE
 - 114" W.P. PIPE
 - 120" W.P. PIPE
 - 126" W.P. PIPE
 - 132" W.P. PIPE
 - 138" W.P. PIPE
 - 144" W.P. PIPE
 - 150" W.P. PIPE
 - 156" W.P. PIPE
 - 162" W.P. PIPE
 - 168" W.P. PIPE
 - 174" W.P. PIPE
 - 180" W.P. PIPE
 - 186" W.P. PIPE
 - 192" W.P. PIPE
 - 198" W.P. PIPE
 - 204" W.P. PIPE
 - 210" W.P. PIPE
 - 216" W.P. PIPE
 - 222" W.P. PIPE
 - 228" W.P. PIPE
 - 234" W.P. PIPE
 - 240" W.P. PIPE
 - 246" W.P. PIPE
 - 252" W.P. PIPE
 - 258" W.P. PIPE
 - 264" W.P. PIPE
 - 270" W.P. PIPE
 - 276" W.P. PIPE
 - 282" W.P. PIPE
 - 288" W.P. PIPE
 - 294" W.P. PIPE
 - 300" W.P. PIPE



N. BUTLER ROAD

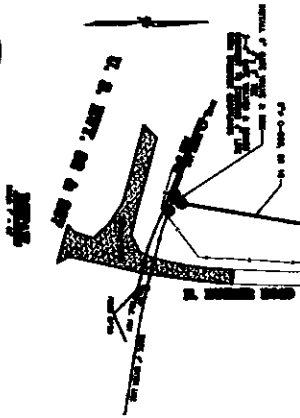
N. BUTLER ROAD

N. BUTLER ROAD

N. BUTLER ROAD

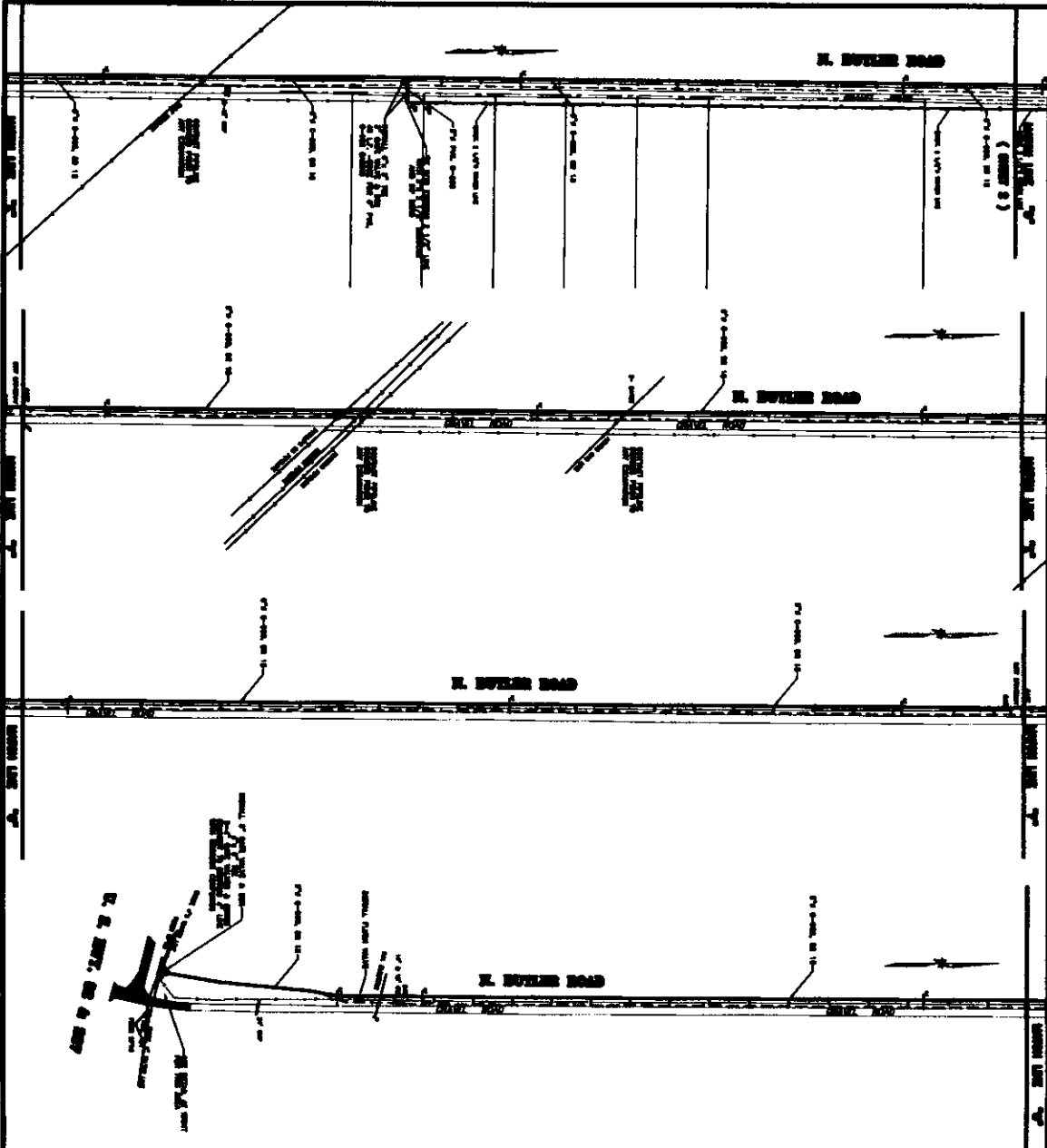
WATER LINE EXTENSION
HAMMOND RANCH WATER PLANS
 FROM BLUE SPRING UTILITY SERVICE
 CLAY COUNTY, MISSOURI

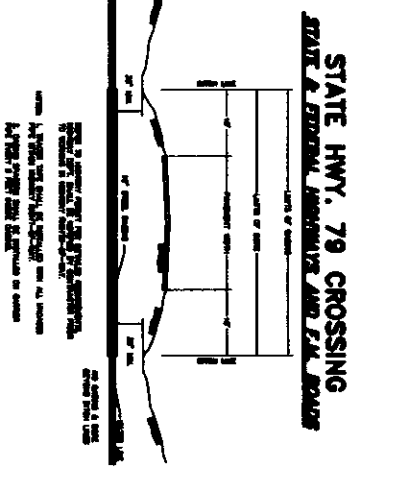
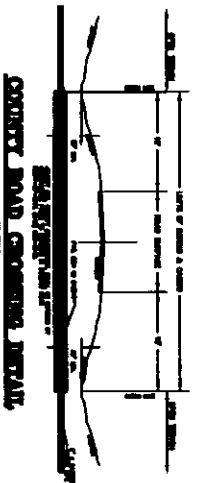
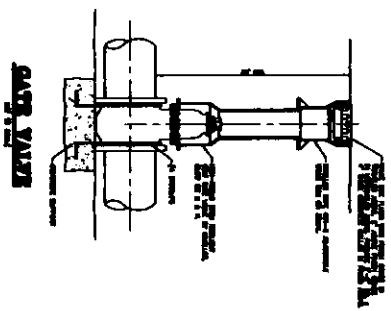
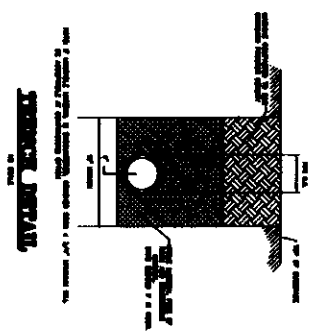
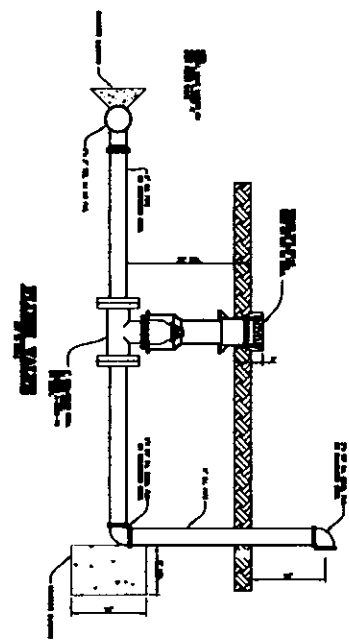
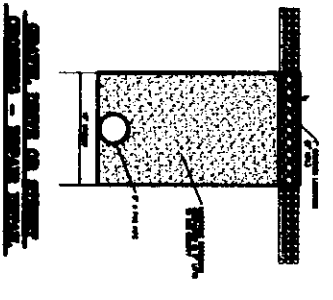
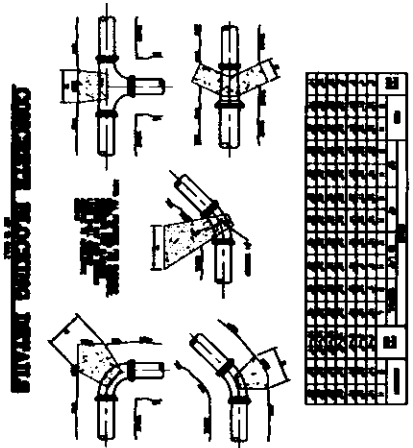
DESIGNED BY: O'NEILL, FERRIS & SMITH, P.L.L.C.
 ENGINEER: O'NEILL, FERRIS & SMITH, P.L.L.C.
 DATE: MAY 5, 2016



- LEGEND**
- 1. WATER LINE
 - 2. GAS LINE
 - 3. ELECTRIC LINE
 - 4. TELEPHONE LINE
 - 5. MANHOLE
 - 6. UTILITY LINES
 - 7. EASEMENT
 - 8. PROPERTY LINE
 - 9. ROAD CENTERLINE
 - 10. ROAD RIGHT-OF-WAY

SCALE: 1" = 10'





DETAIL SHEET
HARMOND RANCH WATER PLANS
 FROM BLUE PRINTS ONLY DRAWING
 CLAY COUNTY, TEXAS

CONCRETE, REINFORCED & SEALS. P.L.S.
 CONSULT THE ARCHITECT'S PLAN
 FOR ALL DIMENSIONS & NOTES
 ALL WORK TO BE DONE IN ACCORDANCE
 WITH THE CITY ENGINEERING DEPARTMENT
 SPECIFICATIONS FOR WATER MAINS

DATE: JULY 2012
 SHEET: 5 OF 5